

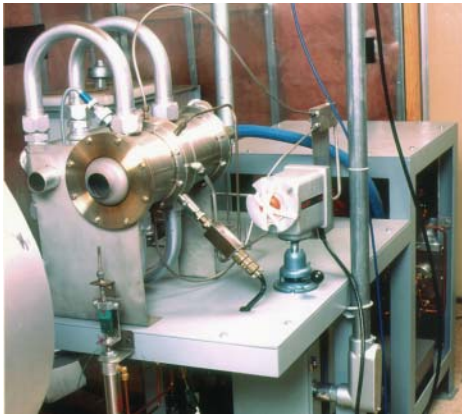
**B**econ Incorporated, founded in 1966 is a dynamic and innovative company that has been designing and manufacturing a wide variety of engineered control systems, test stands, automatic process equipment, ancillary gas & steam turbine equipment, fuel cell power plant & support equipment.

It is our policy to deliver to our customers, defect free, competitively priced products and services which meet or exceed all customer requirements. Quality, in this Company, means meeting and exceeding all Customer requirements and expectations. This policy is instilled in each employee and shared by our supplier base.

Our mission is to position our customers to be more competitive, by supplying leading edge technologies and products which operate the first time and every time throughout the defined life of the product.



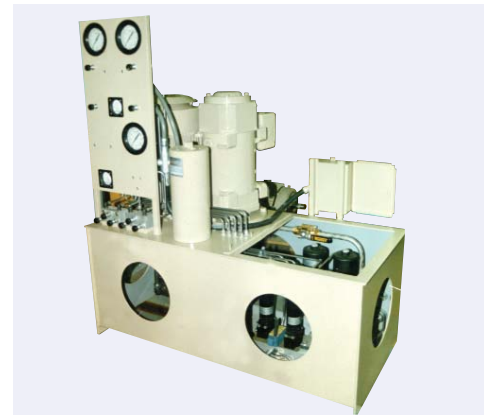
**Bloomfield, CT  
Facility**



Laboratory Combuster Unit  
For High Temp Testing



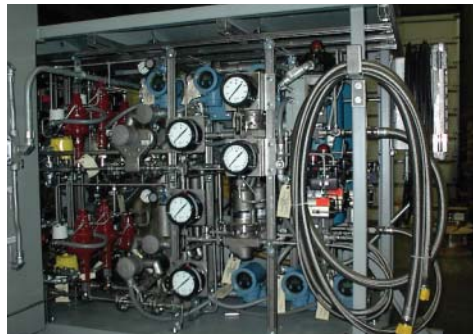
Fuel Cell Power Plant



Hydraulic Power Unit



Water Injection Skid



Explosion Proof Gas Mixing Cart



Gas Turbine Controls



Gas Turbine Temperature  
Control Module



Closed Loop Temp Control System



Gas Turbine Control Panel

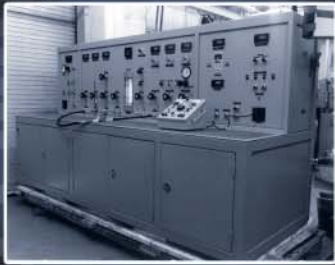


**INCORPORATED**

522 Cottage Grove Road, Bloomfield, CT 06002 ■ (860) 243-1428 ■ Fax: (860) 242-3053  
[www.beconinc.com](http://www.beconinc.com)

# **BECON** **INCORPORATED**

Designers and Manufacturers of Engineered Control Systems, Test Stands, Automatic Process Equipment and Ancillary Gas & Steam Turbine Equipment, Fuel Cell Power Plant & Support Equipment



# Engineered Control Systems

**Manufacturer for The Power Generation Industry:**

- FUEL GAS SYSTEMS
- WATER INJECTION SYSTEMS
- GAS TURBINE ENCLOSURES & SILENCING SYSTEMS
- FOGGING SYSTEMS
- ELECTRICAL CONTROL PANELS
- HYDRAULIC POWER UNITS
- LUBE OIL SYSTEMS
- FUEL FORWARDING SYSTEMS
- FUEL CELL POWER PLANTS & SUPPORT EQUIPMENT
- WET BLASTING SYSTEMS

# Automatic Process Equipment

**Engineered Solutions for Automation of Material Processing and R&D Products for Industrial Applications**

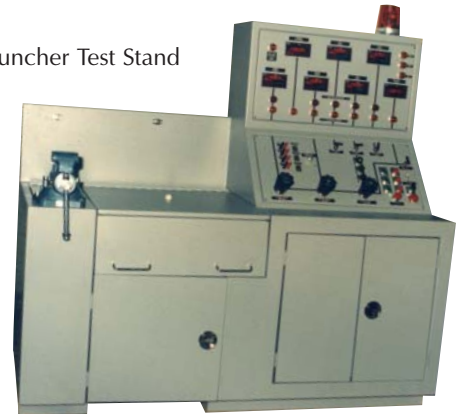
- ABRASIVE & NON-ABRASIVE CLEANING SYSTEMS
- GAS MIXING SKIDS
- INDEX TABLES, COMPONENT PICK & PLACE
- VACUUM PRESSURE SYSTEMS
- REFRIGERATION SYSTEMS
- COMPUTERIZED COATING SYSTEMS
- SURFACE FINISHING SYSTEMS
- AUTOMATED WASHING/RINSE TANK LINES
- OXYGEN ENRICHMENT SYSTEMS
- PLC & PC BASED PROGRAMMING

# Test Stands

**Evaluation of Products Through Simulation, Research and Development to Define Functional Capabilities of Products**

- TEST STANDS FOR JET ENGINE COMPONENTS
- PATRIOT ENVIRONMENTAL CHAMBER
- GAS CONDITIONING SKID
- LABORATORY COMBUSTOR SYSTEMS
- AUTOMATIC PROCESS EQUIPMENT
- AUTOMOTIVE FUEL CELL TEST EQUIPMENT
- ELECTRICAL CONTROL SYSTEMS
- TEST STANDS FOR SUBMARINE OVERHAUL COMPONENTS
- F-18 LUBE OIL & SCAVENGE QUALIFICATION TEST
- ADHESIVE DISPENSING STATIONS

Launcher Test Stand



# Acoustical Equipment

- DESIGN AND FABRICATION OF NOISE CONTROL SYSTEMS FOR THE GAS TURBINE INDUSTRY

# Comprehensive Capabilities

Our resources include a professional design team of structural, mechanical and electrical engineers. Our engineers have years of experience in preparing specifications, selecting components and instrumentation for all types of control systems.

Our design team works with fabricators, mechanical, electrical and electronic assemblers, welders, insulators, quality assurance, purchasing and sales representatives, using advanced technologies and experience to produce high quality equipment and systems built to customer specifications.

- Our electrical and mechanical designers are proficient in the latest CAD applications.
- Becon's electrical department designs and manufactures to customer specification, which typically include ANSI, ATEX, CE, CEC, CSA, IEEE, JIC, MIL, NEC, NFPA and/or UL standards, as applicable.
- We have designed & manufactured many complicated prototype projects.
- Our quality control program is compliant with ISO 9001 and is used to monitor all aspects of fabrication. Our inspectors, qualified in accordance with ASNT (American Society for Non-destructive Testing), perform magnetic particle testing, liquid penetrant and ultrasonic inspections. We also have radiography testing capability.
- Our production workspace capacity exceeds 100,000 square feet complete with both 10 ton and 30 ton overhead cranes, sand blasting and painting facilities.
- Our employees are experts in working with various grades of stainless steel, carbon steel, copper/nickel, and bronze. We are also skilled in cutting, bending, forming and shaping these metals into various structures, components and sub-assemblies, used in conjunction with engineered CAD based designs.
- Becon's welders are qualified to include ASME IX, NAVSEA S9074-AQ-GIB-010/248, AWS and EN 287-1 (Pressure Equipment Directive), using FCAW, GMAW, GTAW Stud Welding, and SMAW. Weld procedures have been qualified for welding carbon steel, stainless steel, Inconel, Monel, copper-nickel, aluminum and bronze. Codes we have welded to ASME B312.1 (Power Piping), B31.3 (Power Piping), CSA B51 (Canadian Boiler & Pressure Vessels), PED category 1,2, & 3, NAVSEA S9074-AR-GIB-010/278 and AWS D1.1, D1.2 Non-destructive Testing is available. Personnel are qualified in accordance with ASNT-TC-1A and NAVSEA T9074-AS-GIB-010/271. NDT processes available are Magnetic Particle Testing, Liquid Penetrant Testing, Visual Inspection and Ultrasonic Testing.



## Metal Fabrication & Finishing Equipment

- Pacific 12', 200-ton press brake
- Accupress 12', 250-ton press brake
- Steelweld 1/2" x 12' shear
- 1/4" x 12' shear (2)
- M&M plate roller
- Strippet punch machine
- MIG/TIG welding
- Plasma/torch cutting
- Empire sandblast system
- 12,500 sq ft paint spray booth with gas fired make-up system
- 400 sq. ft. paint spray booth

## Material Handling Equipment

- 30-ton crane, 28' ground to hook
- 10-ton crane, 18' ground to hook
- (10) 2-ton rail mounted electric chain hoists
- (2) 1 ton crane, 12' ground hook
- Various fork lift trucks, up to 10,000 lb. capacity

## Comprehensive Test Equipment

- Over 5000 gallons of test oils & fuels
- 200 gallon DI water test system
- Various meters and oscilloscopes
- Variable frequency drives, starters & DC drive
- Process tanks, valving, & flow meters



Military Gas Turbine Lube, Oil & Hydraulic Start System



2 Megawatt  
Fuel Cell  
Plant Circa  
1976